



www.cciam.eu

# FFCUL - CCIAM

## WHO WE ARE

The Climate Change Impact, Adaptation and Modelling Research Group (CCIAM) is part of the Fundação da Faculdade de Ciências da Universidade de Lisboa (FFCUL) and a Portuguese reference group in integrated research on climate change.

The group is currently structured around three key research topics: **Climate change causes and environmental impacts**, including identification of changes in flood and drought characteristics, vulnerability assessment of Montado-Dehesa systems and evaluation of their contribution to general resilience. **Integrated methodologies for assessing climate change impacts, risks and adaptation strategies**, including risk indicators for water management, agro-forestry and ecosystem services and development of coupled climate impact-adaptation models. **Adaptation and sustainability**, including the design of science-society interfaces, support of effective adaptation decision-making and policy implementation, and the development of active stakeholder engagement methods.

## WHAT OUR EXPERIENCE IS

- Leading roles in large EU research and coordination projects such as ADMICCO, 2-Fun, BASE, ESA-VA4D, CLOUD, CIRCLE CA, CIRCLE-2 ERA-Net and CIRCLE-Uncertainties
- National reference in national and regional integrated assessments of Climate Change Impacts, Vulnerability and Adaptation, through flagship projects SIAM (phases 1/2) and CLIMAAT II
- National reference for sectoral-driven Climate Impact and Adaptation research in fields like: biodiversity & ecosystems (BioAdaPT); water resources & water supply (CIRAC, ADAPTACLIMA-EPAL); coastal areas (CHANGE)
- Reference centre for knowledge development and climate adaptation policy support at national (National Adaptation Strategy) and local (SIAM-Sintra; SIAM-Cascais) level
- Long standing experience on EU climate policy support through the European Topic Centre on Climate Change Impacts, Vulnerability and Adaptation (ETC-CCA)
- Long standing experience in EU and national research policy development via involvement in coordination initiatives like JPI-Climate, JPI-Water and JPI-FACCE

## WHAT WE DO IN IMPRESSIONS

- Co-lead WP1 on innovative and effective decision-making under uncertainty
- Co-lead the WP3 Iberian case study
- Contribute to all other WPs as knowledge developed in WP1 will be used to define research strategies across WPs and the Iberian case study will provide context and application to IMPRESSIONS research

**CCIAM**  
Centre for Climate Change Impacts Adaptation & Modelling

The Centre for Climate Change Impacts, Adaptation & Modelling (CCIAM) is an international research group at the Faculty of Sciences of the University of Lisbon (FCUL)

**MISSION**  
To conduct integrated research on Climate Change Impacts, Vulnerability and Adaptation in Portugal, Europe and beyond that is able to respond to the challenges of global and local environmental change.

**RESEARCH AREAS**  
CCIAM has a long-standing experience at local, national and international scales gained from multiple projects in the fields of:

- Climate Change Impacts and Adaptation assessment
- Climate Change Adaptation and Mitigation policy and strategy
- Statistical downscaling of climate and socio-economic scenarios

We conduct pioneering research on the following sectors:

- Public health
- Coastal zones
- Water resources
- Biodiversity and Ecosystems
- Forests and agriculture
- Tourism

**CONTACTS**  
Faculdade de Ciências da Universidade de Lisboa - CCIAM,  
Ed. C3, sala 3.4.39, Campo Grande,  
1749-016 Lisboa, Portugal  
Tel.: +351 217 500 387; Fax: +351 217 500 386;  
E-mail: amarianones@fc.ul.pt  
www.cciam.eu

## WE ARE ALSO INVOLVED IN

- CIRCLE-2 ERA-Net
- BASE (FP7)
- ETC-CCA
- National Adaptation Strategy (Portugal)
- Adaptaclima-EPAL (Adapting water supply to climate change scenarios)
- BioAdaPT (Portuguese Climate Change Adaptation Strategy for Biodiversity)

### Tiago Capela Lourenço



- Researcher at FFCUL
- Degree in Environmental Engineering
- Undergoing his PhD studies at the University of Lisbon
- Coordinator of the CIRCLE-2 ERA-Net (FP7)
- Involved in projects BASE (FP7) and ETC/CCA (EEA)
- Areas of research: climate change adaptation, uncertainties, decision-making and national adaptation policies.

### Maria João Cruz



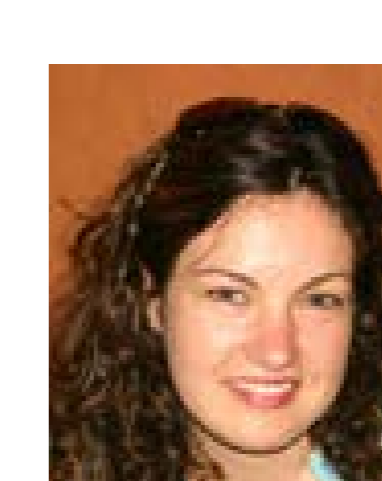
- Research Coordinator at FFCUL
- Degree in Biology and a PhD in Ecology
- Coordinator of several projects on climate change impacts and adaptation including Adaptaclima, BioAdaPT; and national coordinator of the ETC/CCA
- Areas of interest: biodiversity vulnerabilities to climate change and ecosystem-based adaptation.

### Filipe Duarte Santos



- Professor of Physics and Environmental Sciences at the University of Lisbon;
- Director of CCIAM
- Holds a M.Sc. in Geophysics and a Ph.D. in Theoretical Physics by the University of London.
- Vice-President of the UN Commission on the Peaceful Uses of Outer Space and delegate to the Conference of Parties of the UN Framework Convention on Climate Change since 1999.
- Review Editor for the 5th Assessment Report of the IPCC

### Lívia Moreira



- Head of international projects office of FFCUL
- International R&D projects management (Framework programmes, ESA, EUMETSAT, UNESCO)
- Preparation of projects proposals, financial management and organizing meetings
- Bachelor in International Relations