

## Dutch Research Institute For Transitions

### WHO WE ARE

- **DRIFT** at Erasmus University Rotterdam is the international leading institute in the field of Sustainability Transitions and especially Transition Management. DRIFT is a multi-disciplinary team of researchers committed to sustainability research and sustainability transitions research at multiple levels from neighbourhoods to cities to regions to the planet level, working in an inter-disciplinary, trans-disciplinary and inter-paradigmatic way. DRIFT combines cutting edge research with close cooperation with policy and business to further sustainable development in practice. DRIFT is involved with, has led and leads a number of inter- and trans-disciplinary research projects on urban sustainability and sustainability transitions.

### WHAT OUR EXPERIENCE IS

- Involvement in local, national and international projects concerned with energy, water, food, urban areas and other utility sectors.
- Application of Transition Management (TM) as a governance approach which can be used analytically to map the transition issues for models, structure the problems of unsustainability, and identify the factors and actors in a participatory process for developing transition pathways.
- Research on sustainability agendas and matching socio-political and socio-economic needs with emerging innovations of all kinds (governance, social, economic and technological).
- Action research on co-creating enabling conditions for transition experiments and social and governance innovations.
- Interpretative and engaged (action) research on governance for sustainability transitions including, but not limited to, collaborative arrangements (partnerships) and new generation governance (community owned infrastructures).
- Research on politics of sustainability transitions with a focus on self-organisation dynamics of transition initiatives, on inclusivity and justice of innovations that alter the speed of change and on actor-centred dynamics of transitions.



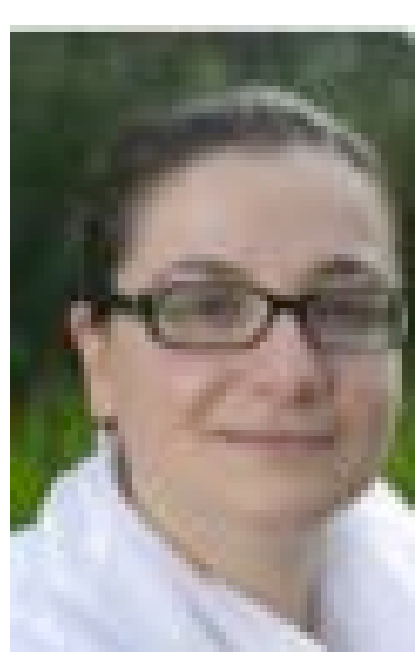
### WHAT WE DO IN IMPRESSIONS

- Co-lead WP4 on the development of Adaptation and Mitigation Transition Pathways across scales, with multi-sectoral and time-dependent elements.
- Design a stakeholder-led methodology linking tipping points and uncertainties across scales (enhanced TM approach) (collaborating with WP2 and WP3).
- Organise stakeholder workshops in each case study to generate a suite of harmonised multi-sectoral pathways (together with WP6).
- Formulate mechanisms to connect adaptation and mitigation pathways (WP5).
- Assess the adequacy of adaptive capacities to implement adaptation pathways (collaborating with WP5).

### WE ARE ALSO INVOLVED IN

- |           |             |
|-----------|-------------|
| ● ARTS    | ● InContext |
| ● TRANSIT | ● MUSIC     |
| ● SUSTAIN | ● iMVO      |
| ● URBES   | ● MATISSE   |

#### Dr. Niki Frantzeskaki



- Senior researcher and lecturer on Sustainability Transitions
- Researcher on transition dynamics of national, regional and local infrastructure systems and their governance
- Research leader in trans-disciplinary projects on urban green and blue infrastructure governance in Europe, Australia and Africa
- Research leader in multi-disciplinary project (ARTS) on societal challenges for accelerating transitions in European Regions

#### MSc. Katharina Hölscher



- Doctoral Researcher on Transition Management for adaptation and mitigation action to climate change
- Interdisciplinary researcher on environmental science, policy, politics and governance with a passion for sustainability oriented research
- Analytical and interpretative researcher on the process of transition management at the urban scale

#### Prof. Derk Loorbach



- Professor of Socio-economic transitions to sustainability
- Founder of Transition Management approach and thinking
- Research leader on transition management application projects in Netherlands, Belgium and Japan
- Research leader on European-African collaborative projects on transforming business models towards sustainability in SMEs