

IMPRESSIONS



<http://www.tiamasg.ro>

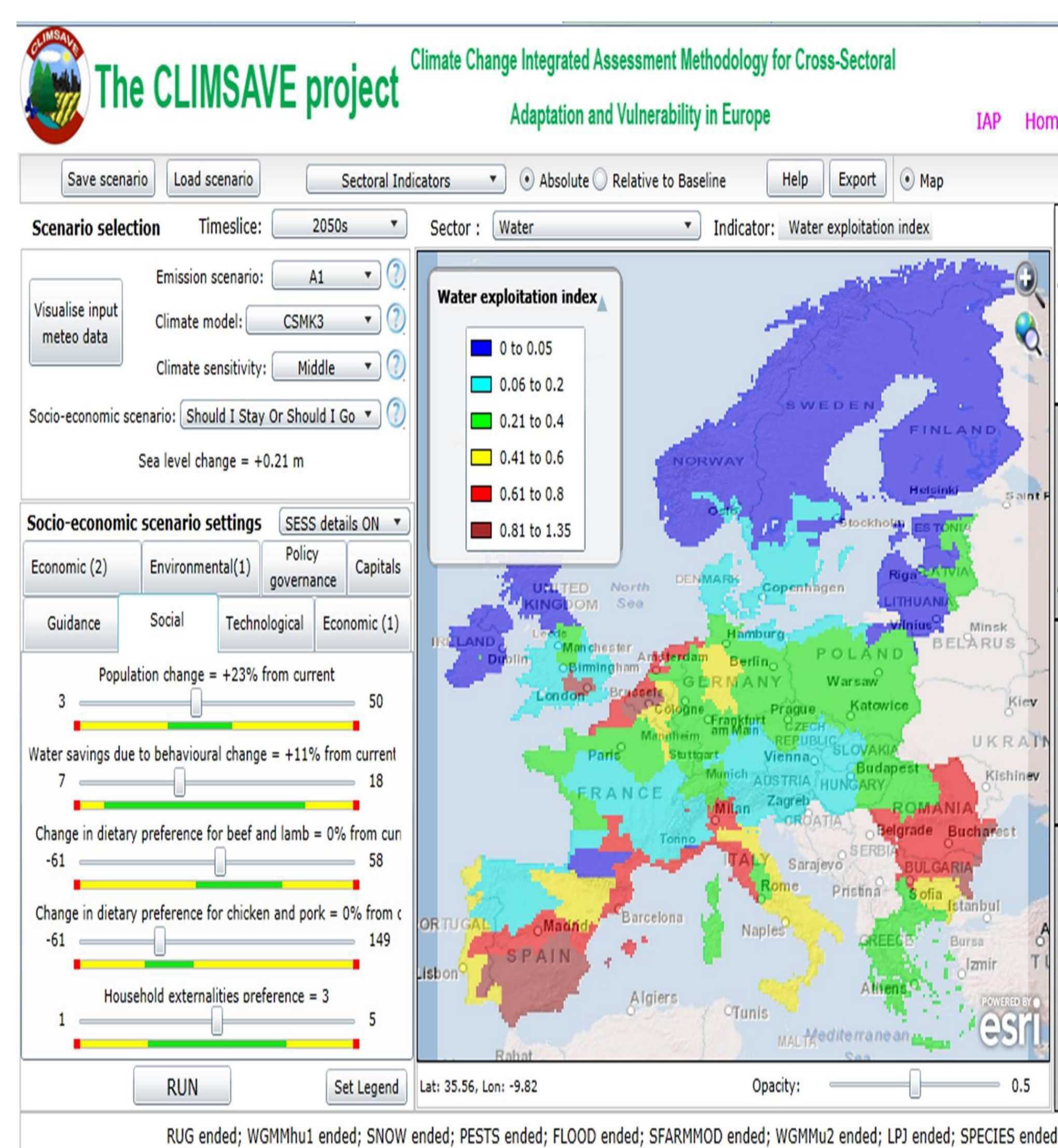
Fundatia pentru Tehnologia Informatiei Aplicate In Mediu, Agricultura si Schimbări Globale

WHO WE ARE

- TIAMASG Foundation is a private non-profit and non-governmental organisation;
- is involved in applying information technology in research activities related to the natural environment and global changes;
- has significant experience of working in EC projects over several framework programmes;
- is focusing on the development of software, web platforms, spatial and web databases, model and software integration, decision support systems, software for participatory processes ;

WHAT OUR EXPERIENCE IS

- Integrated assessment modelling of climate change impacts and adaptation CLIMSAVE IAP in Climsave FP7 project
- Crop modelling for assessing adaptation of agriculture in European regions at environmental risk under climate change in Adagio FP6 project
- Developing web database in Rubicode FP6 project
- Developing software for participatory processes in Nostrum-DSS FP6 project
- Developing decision support system software - mDSS in Mulino FP5 project
- Modelling framework for assessing climate change effects on land use and ecosystems in Accelerates FP5 project



WHAT WE DO IN IMPRESSIONS

- **WP2:** participating in the development of the multi-scale integrated scenarios;
- **WP3:** develop the IMPRESSIONS Integrated Assessment Model (iRIAM) for Europe / contribute to the development of the integrated modeling framework;
- **WP4:** linking the transition management methodology to the WP3 modeling;
- **WP5 :** participating in the development of the methodology for dynamically simulating changes in adaptive capacity for the scenarios developed in WP2 according to the integrated modeling framework characteristics;

WE ARE ALSO INVOLVED IN

- CLIMSAVE (www.climsave.eu)
- OPERAs (www.operas-project.eu)

Math. George Cojocaru



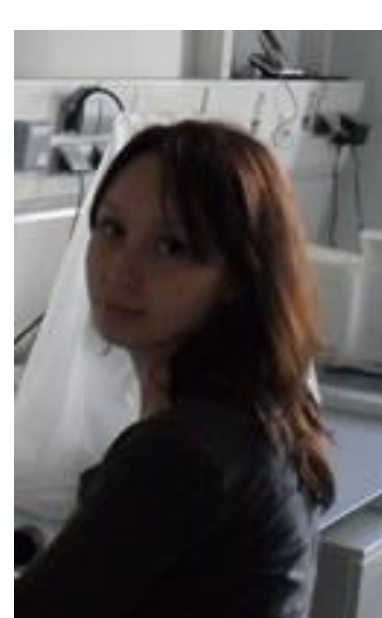
- Senior Research at Tiamasg
- Deputy coordinator of CLIMSAVE
- **Research interests :**
- Cross-sectoral, integrated models for investigating climate change impacts
- Decision support systems
- Modelling frameworks

Dr. Diana Mangalagiu



- Professor at Sciences Po & Neoma Business School, France
- Senior Visiting Fellow at SSEE, University of Oxford
- **Research interests :**
- Articulation of cross-sectoral and multi-scale scenarios and models for investigating climate change impacts and adaptation options
- Integration of environmental and economic policies
- Risk and resilience

Dr. Diana Hanganu



- Research at Tiamasg
- **Research interests :**
- Environmental impact assessments
- Climate change impacts and adaptation options for biodiversity and ecosystem services
- Human-environment relationships and landscape changes

MSc. Cristina Savin



- Software Analyst at TIAMASG
- Computer Science Engineer
- Software Developer in the CLIMSAVE project
- **Research interests :**
- Synergy between new technologies and environmental science
- Applying computer science technologies in the ecosystem services domain